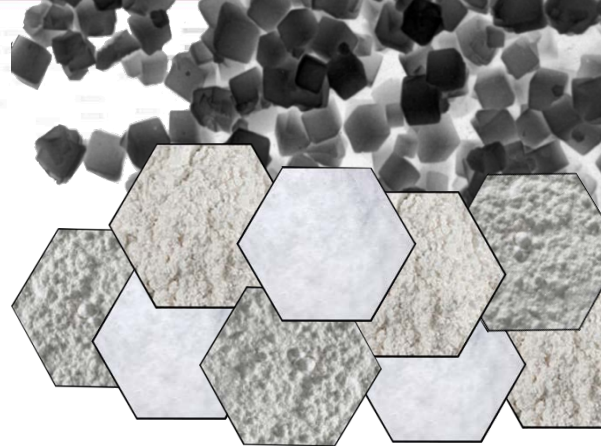


13X Powder

Molecular Sieve



Description

13X Powder molecular sieve is commonly used as a feeding material and is widely used in the pharmaceutical, food, rubber, plastic, paint, coating, and cosmetic industries. HYD10E can be used to dehydrate air conditioning systems in automobiles to prevent freezing and corrosion, or in air brake systems to avoid system blocking. Powder molecular sieve can also be mixed with polymers to create an adsorbent matrix for other polymeric spacers or applied in polyurethane mixtures to avoid the formation of bubbles and to increase the lifespan of the product.

Specifications

Molecular Sieve			
HYD10E			
Property	Unit	Powder	
Particle Size	µm	2.0 - 4.0	
Static H ₂ O Adsorption	wt%	≥28	
Moisture Content	wt%	≤2.5	
pH	-	≤11.8	
Bulk Density	g/mL (lb/ft ³)	≥0.40 (≥25)	
Packaging	700kg (1,543.2lb) / Super Sack	90kg (198.4lb) / Drum	15kg (33.1lb) / Carton

Industries Used

cosmetics
 auto air brakes
 polymers, plastics, rubbers
 coatings

food industry
 air conditioning
 glue
 sealants

pharmaceuticals
 refrigeration
 paint
 insulating glass

Storage

As an adsorbent, molecular sieve should not be left exposed to open air and should be stored in dry conditions with air-proof packaging.

Connect with us...

Hengye Inc.
 11999 Katy Frwy, Suite 588
 Houston, Texas 77079
Office (832) 288-4288
Fax (832) 288-4230
info@hengyeinc.com



ISO 14001:2004